



Park Road South
, Winslow, MK18 3DS

£2,250 PCM




WATSONS
LETTING SINCE 1961

Park Road South

, Winslow, MK18 3DS

Watsons are delighted to offer for let this brand new five bedroom detached house in the rarely available and sought after Village location of Winslow. The property has an B EPC rating, and the accommodation comprises: Entrance hallway, lounge, ground floor shower room, large kitchen / diner with quartz worktops and integrated appliances, and large doors opening onto the patio area, utility room, stairs to first floor, four bedrooms (two with en-suite shower rooms), family bathroom, stairs to top floor, bedroom five with en-suite shower room, eves storage. To the exterior is a generous rear garden with patio area, and driveway to the front. The property is offered Unfurnished, and is available immediately.



Entrance Hallway

Lounge

15'0 (max) x 11'4 (max) (4.57m (max) x 3.45m (max))

Ground Floor Shower Room

Kitchen / Diner

18'9 x 16'3 (5.72m x 4.95m)

Utility Room

6'4 x 5'10 (1.93m x 1.78m)

Stairs to First Floor

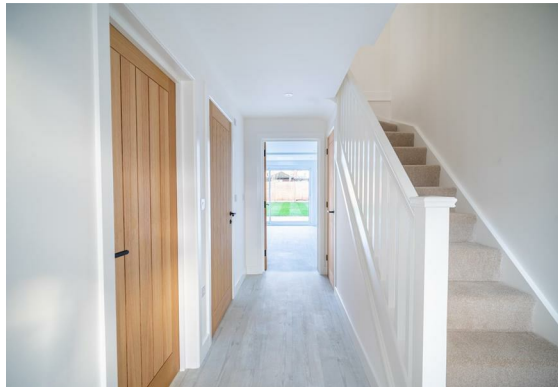
Bedroom One

12'0 x 10'10 (3.66m x 3.30m)

En-Suite Shower Room

Bedroom Two

10'10 x 9'3 (3.30m x 2.82m)





En-Suite Shower Room

Bedroom Three

11'5 x 7'7 (3.48m x 2.31m)

Bedroom Four

7'8 x 7'0 (2.34m x 2.13m)

Bathroom

Stairs to Top Floor

Bedroom Five

14'8 (max) x 10'8 (max) (4.47m (max) x 3.25m (max))

En-Suite Shower Room

Eaves Storage

Rear Garden

Driveway



Measurements and floor plans are approximate and for guidance only. Any prospective Tenant should check all measurements. Floor plan coverings and fitments are for example only and may not represent the true finish of the property.

Floor Plan



Total Area: 1548 ft² (excluding eaves storage)
All measurements are approximate and for display purposes only

Viewing

Please contact our Watsons Lettings Office on 01525 378309 if you wish to arrange a viewing appointment for this property or require further information.

17 - 21 Ropa Court, Leighton Buzzard, Bedfordshire, LU7 1DU
Tel: 01525 378309 Email: info@watsonslb.co.uk www.watsonslb.co.uk